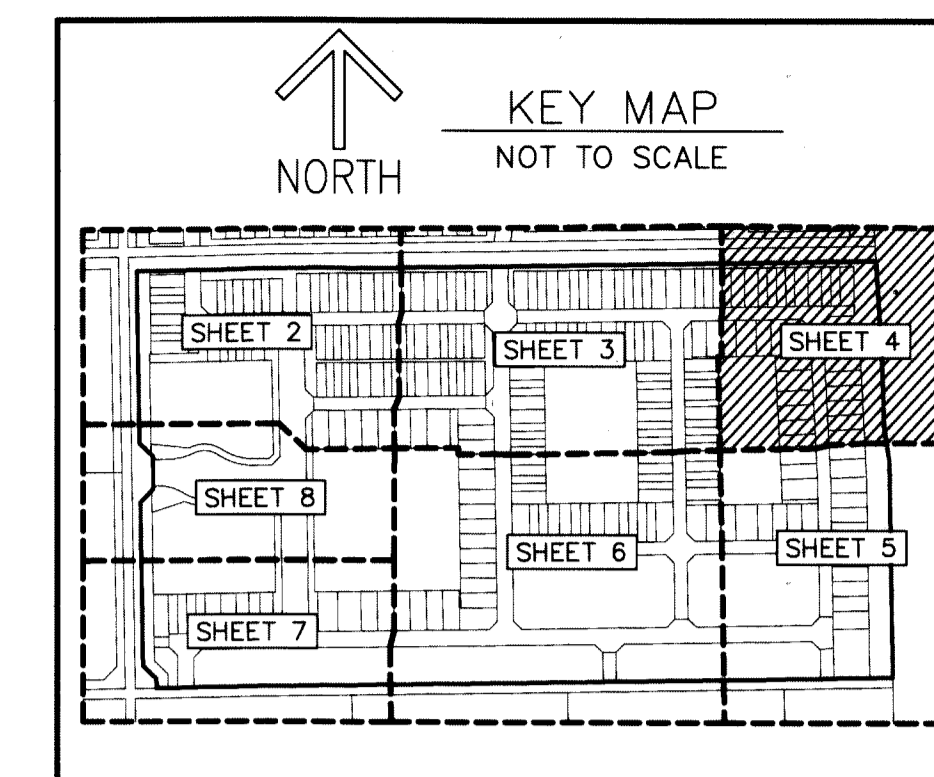


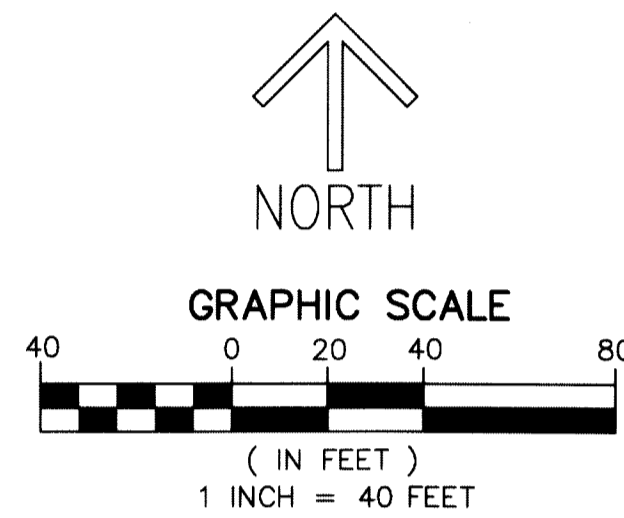
THIS INSTRUMENT PREPARED BY
 DAVID P. LINDLEY
 OF
CAULFIELD and WHEELER, INC.
 SURVEYORS - ENGINEERS - PLANNERS
 7900 GLADES ROAD, SUITE 100
 BOCA RATON, FLORIDA 33434 - (561)392-1991
 CERTIFICATE OF AUTHORIZATION NO. LB3591

FIELDS AT GULFSTREAM POLO PUD - PLAT TWO

A PLANNED UNIT DEVELOPMENT
 BEING A REPLAT OF PARCEL C, TRACT L-13 AND TRACT L-14, FIELDS AT GULFSTREAM POLO PUD - PLAT ONE,
 AS RECORDED IN PLAT BOOK 123, PAGES 80 THROUGH 95, OF THE PUBLIC RECORDS OF PALM BEACH COUNTY, FLORIDA,
 LYING IN SECTION 29, TOWNSHIP 44 SOUTH, RANGE 42 EAST, PALM BEACH COUNTY, FLORIDA

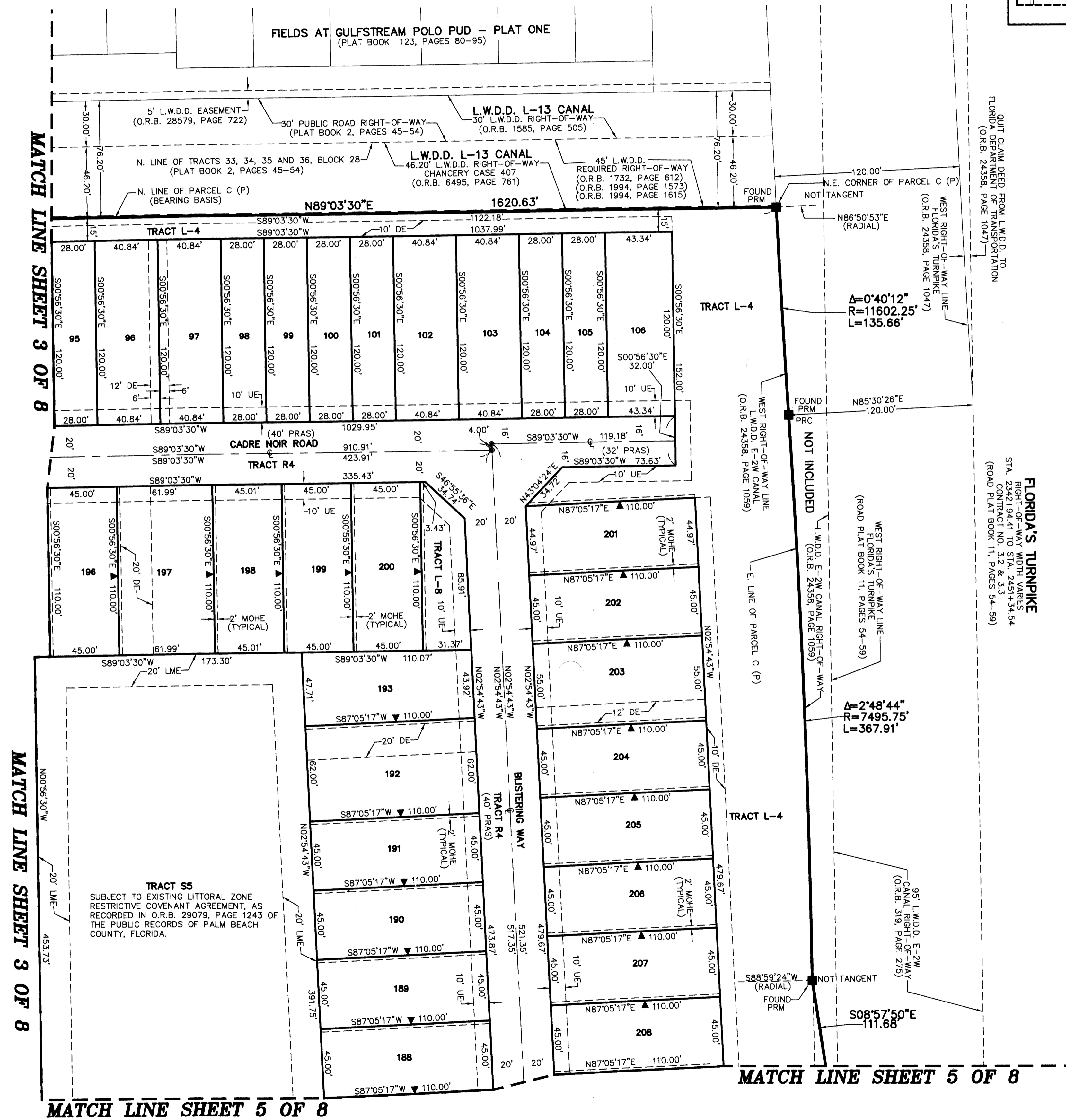


133
 SHEET 4 OF 8



NOTES
COORDINATES, BEARINGS AND DISTANCES
 COORDINATES SHOWN ARE GRID
 DATUM = NAD 83 (90/98 ADJUSTMENT)
 ZONE = FLORIDA EAST
 LINEAR UNIT = US SURVEY FEET
 COORDINATE SYSTEM 1983 STATE PLANE
 TRANSVERSE MERCATOR PROJECTION
 ALL DISTANCES ARE GROUND, UNLESS OTHERWISE NOTED
 SCALE FACTOR = 1.0000236
 GROUND DISTANCE X SCALE FACTOR = GRID DISTANCE
 BEARINGS AS SHOWN HEREON ARE GRID DATUM,
 NAD 83 (90/98 ADJUSTMENT), FLORIDA EAST ZONE.

LEGEND/ABBREVIATIONS
 C - CENTERLINE
 Δ - DELTA (CENTRAL ANGLE)
 CB - CHORD BEARING
 CD - CHORD DISTANCE
 DE - DRAINAGE EASEMENT
 E - EASTING (WHEN USED WITH COORDINATES)
 L - ARC LENGTH
 LAE - LIMITED ACCESS EASEMENT
 LB - LICENSED BUSINESS
 LMAE - LAKE MAINTENANCE ACCESS EASEMENT
 LME - LAKE MAINTENANCE EASEMENT
 LSE - LIFT STATION EASEMENT
 L.W.D.D. - LAKE WORTH DRAINAGE DISTRICT
 N - NORTHING (WHEN USED WITH COORDINATES)
 MOHE - MAINTENANCE AND OVERHANG EASEMENT
 O.R.B. - OFFICIAL RECORD BOOK
 PC - POINT OF CURVATURE
 PRAS - PRIVATE RESIDENTIAL ACCESS STREET
 PRC - POINT OF REVERSE CURVATURE
 PT - POINT OF TANGENCY
 PBCUE - PALM BEACH COUNTY UTILITY EASEMENT
 (P) - FIELDS AT GULFSTREAM POLO PUD - PLAT ONE
 (PLAT BOOK 123, PAGES 80-95)
 (P2) - PALM BEACH FARMS CO. PLAT NO. 3
 (PLAT BOOK 2, PAGES 45-54)
 R - RADIUS
 (R) - RADIAL
 RCE - ROADWAY CONSTRUCTION EASEMENT
 UE - UTILITY EASEMENT
 SWE - SIDEWALK EASEMENT
 ▲ - INDICATES "ZERO" SIDE OF LOT LINE
 ■ - DENOTES PERMANENT REFERENCE MONUMENT
 4" x 4" x 24" CONCRETE MONUMENT WITH
 ALUMINUM DISK STAMPED "C&W PRM LB3591"
 ● - PCP - DENOTES PERMANENT CONTROL POINT
 NAIL AND METAL DISK STAMPED "PCP LB3591"



QUIT CLAIM DEED FROM L.W.D.D. TO
 FLORIDA DEPARTMENT OF TRANSPORTATION
 (O.R.B. 24558, PAGE 1047)

FLORIDA'S TURNPIKE
 ROADWAY AND UTILITIES
 STA. 2442+34.41 TO STA. 2451+34.54
 CONTRACT NO. 3.2 & 3.3
 (ROAD PLAT BOOK 11, PAGES 54-59)

MATCH LINE SHEET 3 OF 8

MATCH LINE SHEET 3 OF 8

MATCH LINE SHEET 5 OF 8

MATCH LINE SHEET 5 OF 8